

powered by

**Panasonic**

*Cost Effective · Flexible · Energy Saving · Reliable*

# Schools

**Energy Saving  
Lighting Control  
Systems for  
New Construction  
and Retrofit.**



**PL** Buildings

Lighting Control Systems

# Our systems are versatile enough to control an entire campus or a single classroom.

*PLCBuildings offers lighting control solutions ideal for educational facilities. Our feature-rich, user-friendly P-Series Controllers easily integrate into any building, new or old, to make lighting more efficient. Along with this efficiency comes substantial energy savings. Just imagine what that can do to reduce your operating expenses.*

## **Control up to 7,936 circuits**

*Our lighting control system gives you the ability to dictate the light levels in as many as 7,936 circuits. You can preprogram buildings, classrooms and even class sections so that the lights come on and go off without manual switching. Our systems will monitor the sunlight levels in every classroom, increasing or decreasing light as needed. This alone will improve classroom comfort while greatly reducing the amount of electricity needed to provide lighting.*

## **Perfect for any Application**

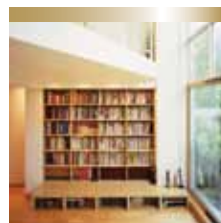
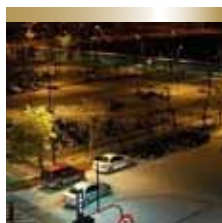
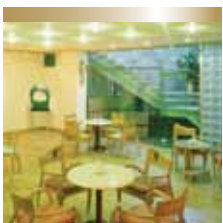
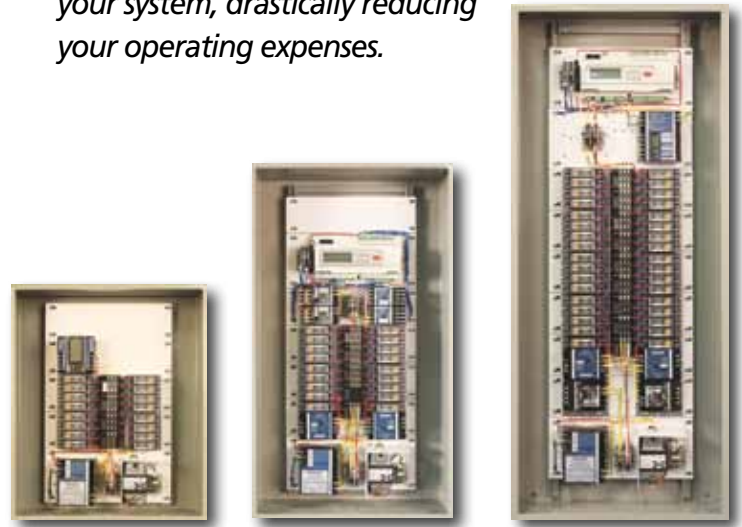
*Our cost-effective, easy to operate lighting control system is ideal for integrating into your facility. This robust system is easy to install with fully-contained controllers and Full 2-Way bus, minimizing wiring and increasing contractor productivity. It's made with the highest quality components. The switches and sensors are powered by the most reliable relays in the World - Panasonic. This system literally operates trouble-free.*

## **A System Anyone Can Operate**

*The operating features are so simple, almost anyone can manage your lighting network. All circuits can be programmed from any computer with a web interface. Step-by-step instructions, graphical screen prompts and pre programmed commands makes this comprehensive system very easy to operate.*

## **Easy to Build into Any Budget**

*You literally can have it all with this system - what you need now and what you'll need years down the road. Simply install one master controller, then "plug in" additional controllers (up to 255 total relays) as needed. Each controller communicates directly to the master controller, operating independently of all other controllers. Be prepared to reap the benefits as this energy miser squeezes every possible kilowatt out of your system, drastically reducing your operating expenses.*



# Features

## Lighting Solutions for All Kinds of Spaces

Spaces	Photo Sensor	Motion Detector	Switches	Relay	Dim	Organization
Classrooms	Daylight	Ceiling	4 Button	4x6A	0-10V	Groups / Patterns
Gym	Skylight	High Bay	4 Button	20A		Groups
Libraries	Skylight	Daylight	4 Button	20A	0-10V	Groups / Patterns
Bathrooms		Light & Fan		20A		Individual
Corridors	Ceiling	Outdoor	1 Button Sched. Enabled	20A		Groups
Cafeterias	Daylight		1 Button Sched. Enabled	20A	0-10V	Groups / Patterns
Offices	Daylight	Wallplate	2 Button	4x6A		Individual
Parking Lot	Outdoor		1 Button Sched. Enabled	20A		Groups

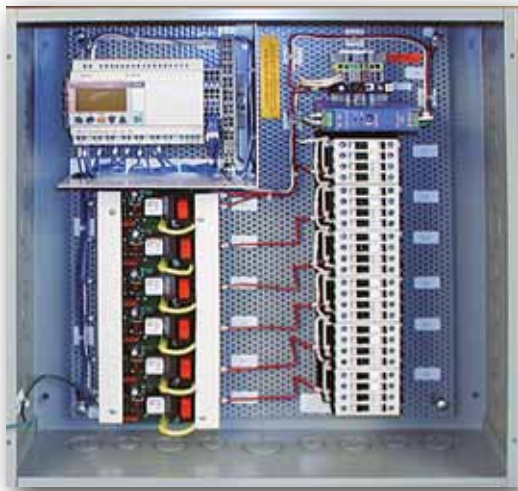
## Lighting Solutions to Your Problems

Problem	Solution	Feature
Limited Budget	Incremental Addition	Modular P- Series Panels
Campus Control	Multi-System Web Server	G-Web up to 7936 relays
Building Control	Bacnet points to BAS	P-Web up to 255 relays

## Product Specifications

Series	Model	Circuits	Groups	Patterns	Modbus	Bacnet	P-Web	G-Web
P	LPB	255	127	72	No	No	No	Yes
P	LPE	255	127	72	Option	Option	Option	Yes
P	LPA	255	127	72	Yes	Yes	Yes	Yes
C	LCM-IE	48	No	No				
C	LCM-Astro	48	No	No				





## Lighting Solutions for Remote Spaces

*You can control light in remote stand-alone areas around your school, such as parking lots, canopy walkways, sport fields, gymnasiums, and portable/modular classrooms, by utilizing the C-Series systems from PLCBuildings. These systems can be applied directly to smaller remote areas because they work in conjunction with photo sensors yet operate free of any network. The sensors can automatically turn ON/OFF and/or multilevel dim light fixtures. The time clock, switch and sweep functions of the controller will handle the programming.*

### LCM-IE

*Photo control  
Time schedule  
Sweep control  
Override control*

### LCM-Astro

*Time control  
Time schedule  
Astronomical  
Override*



*Lighting Control Systems*

3101 111th Street SW · Suite F · Everett, WA 98204  
425-353-7552  
Fax: 425-353-3353 · [www.plcbuildings.com](http://www.plcbuildings.com)

306\_Schools\_R.1\_4.28.10

  
A Division of PLC Multipoint, Inc.