

powered by

Panasonic

Full-2Way · Bacnet · Ethernet

Ride the Web for Monitoring & Controlling

P-Series

PL Buildings

Lighting Control Systems

powered by

Panasonic

Two Web-Based Options for Remote Lighting Control

PLCBuildings has two web-based options for monitoring and control of lighting controllers. The P-Web is an option for the P-Series LPA panel control, with up to 16 zones. The G-Web's RS485 remote control for either single or multiple panels.

Both the P-Web and G-Web servers tie into a web browser on a PC, offering the best user interface for remote administration.

P-Web Server Single Lighting Controller

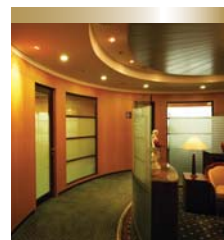
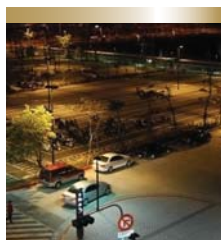
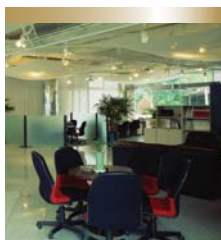
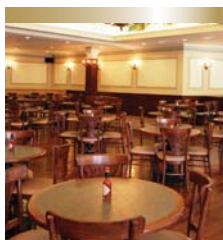
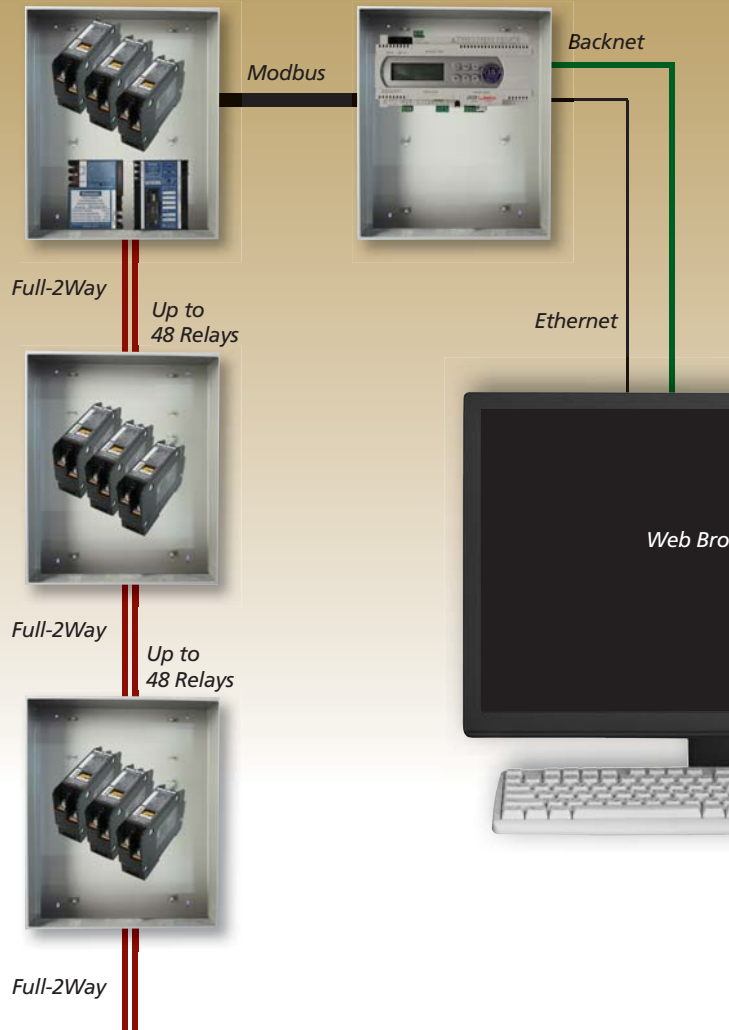
The P-Web server supports 16 zones of line schedules, photo control settings, after hours sweep settings and overrides through a single P-Series LPA lighting panel. The entire system can monitor status and control all 256 relays. 127 Groups and 72 patterns are available to the controller.

The P-Web has several communication options for building automation systems. Specific interfaces can be developed for custom applications. The Full-2Way remote control can also upgrade existing systems, thereby enabling full utilization of the previous control system and network infrastructure.

SCADA Optional Controls

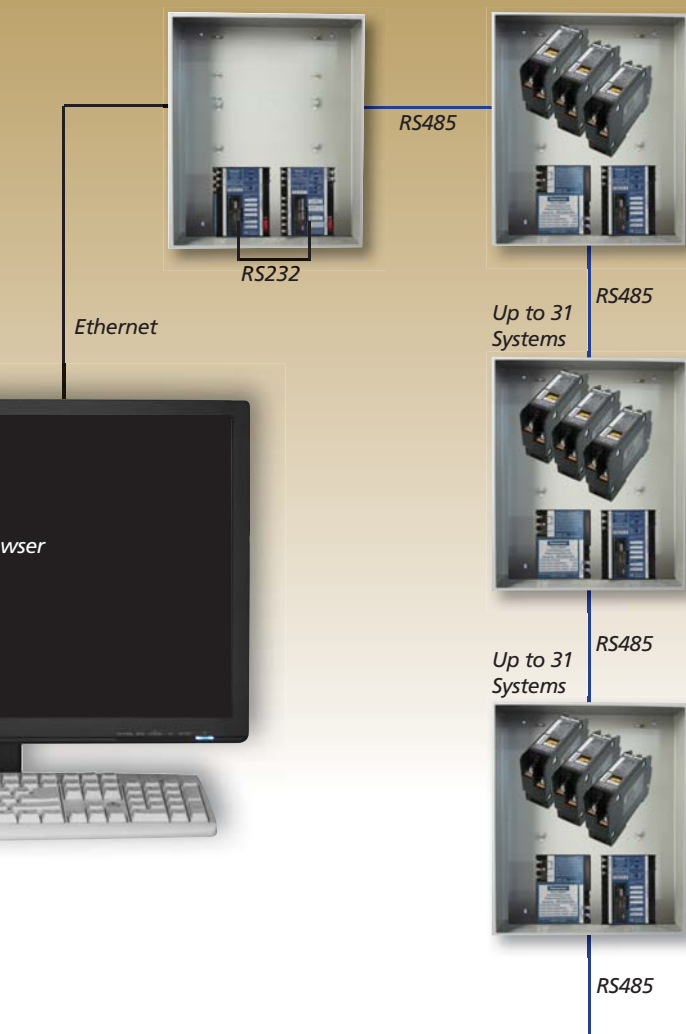
<u>Bacnet</u>	<u>Modbus</u>	<u>Ethernet</u>
207 (Analog)	128 (Analog)	Up to 1,024 Lonwork
207 (Integer)	128 (Integer)	Device Objects
207 (Binary)	128 (Binary)	

P-Web



Used Options Lighting Control

G-Web



G-Web Server Lighting Control Networks

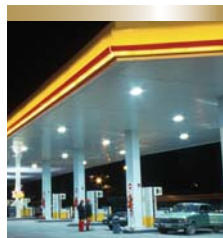
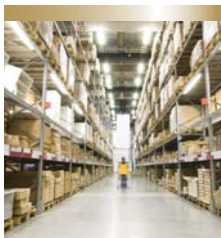
Larger systems can be built on the Panasonic Web Server platform which has configurable support for up to 31 panels each containing up to 255 relays, almost 8,000 relay circuits.

- Central control for large-scale systems
- Control from a single or multiple PC
- Network connection
- Remote control from the web
- Customized interface
- Timer available for schedule control
- Data management and editing
- Various-data accessible in CSV format

Panasonic web server layout allows monitoring and control of the lighting status of items a specified addresses in a table format. A full system can include 7,905 relays, 3,968 groups and 2,232 patterns.

Lighting control made easy because you can do it anywhere.

These versatile lighting control and monitoring options allow you the ability to manage your systems anywhere you have access to the web. Access it from a laptop, desktop or any other portable device. Ride the web for the easiest way to manage your lighting.



Monitoring and Control



P-Web Server

Basic web page monitoring and control for the P-Web include status of inputs and outputs, photo control parameters and output override control.

- 16 Photo controls using CES sensors
- 16 Time schedules each with 2 events for 7 days
- 16 Sweep controls using Warning, Grace period and Extension
- 16 Timed override control

G-Web Server

Log Settings

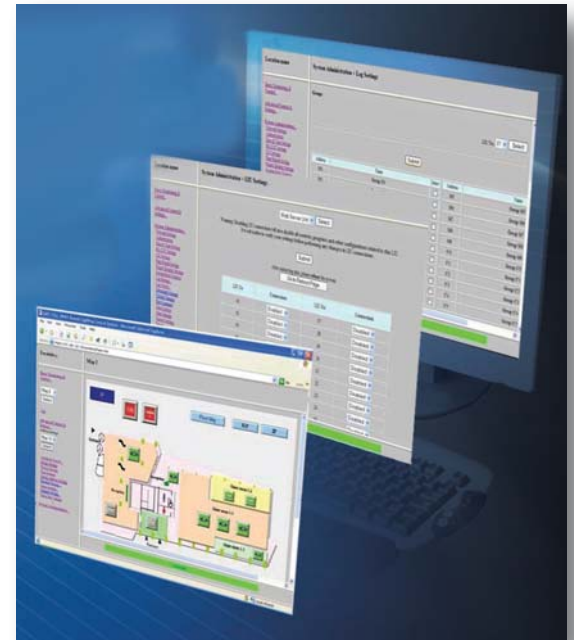
The history of status changes in response to local control can be recorded as a log for Group, Pattern and Zone addresses.

LIU Settings

Displays the interface for configuring LIU connections. An LIU can be physically connected but communications with it can be disabled in these settings.

Creation and Management of Maps

Lighting circuit status can be monitored and controlled visually on a map screen. Display and operation are possible on a window displaying a map depicting the physical layout of the facilities.



Lighting Control Systems

If you have any questions, please call us toll-free at 1-866-998-5483
3101 111th Street SW • Suite F • Everett, WA 98204
425-353-7552 • Fax: 425-353-3353 • www.plcbuildings.com

305 Communication Rev1

A Division of PLC Multipoint, Inc.

