

NetBurner

INSTALLATION AND MAINTENANCE MANUAL (IMM)

PLC Multipoint

1. Connections
 - Connect the NetBurner device to the power source.
 - The LED under the PWR label, will illuminate green when power is correctly applied
 - Connect the NetBurner device to the LAN with a standard Cat 5 Network cable.
 - The two small LED's will illuminate when a proper network connection between the NetBurner and the local network has been established,.
2. Configuration
 - Install the NetBurner IPSetup Tool on the computer being used to configure the system.
 - It can be downloaded at:

<https://www.netburner.com/index.php/support/doc-s-and-downloads/sb800-ex/deployment-tools-25/1046-ip-setup-23>

Note: Before opening the IP Setup Tool, ensure that the Windows Firewall is not running on the computer being used to configure the system.

Note: Some anti-virus programs have been known to interfere with the IP Setup Tool and may need to be disabled.

- Open the NetBurner IPSetup Tool (see Figure 1).

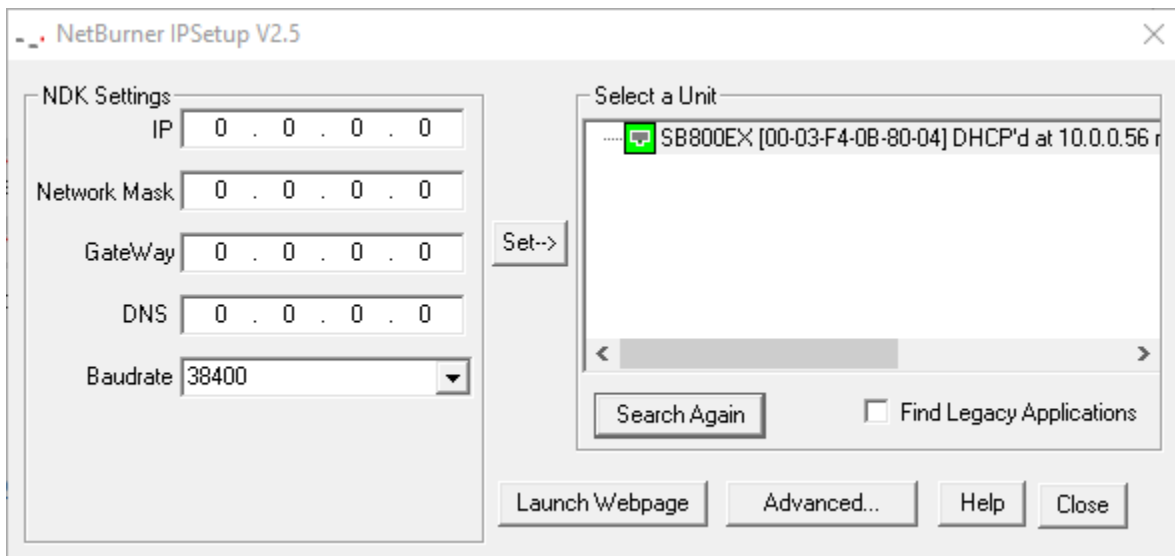


Figure 1 – NetBurner IPSetup Tool

- In the Select a Unit window, select the NetBurner device being configured.
- Click the 'Launch Webpage' button (see Figure 2).

The screenshot shows the NetBurner configuration interface. At the top left is the NetBurner logo with the tagline "Networking in 1 day!". To the right is a navigation bar with links: Network | UDP | TCP | SSH | Serial | Password | HTTPS | CA Certs | Advanced | Help. The main content area is titled "Network" and contains the following settings:

- Protocol: TCP/SSL (Changing will terminate all existing connections)
- Device Name (for DHCP): SB800EXSX-8004
- NetBIOS Name: SB800EXSX-8004
- Version: 02.07.0002

	Static Settings	DHCP Assigned Values	Address Mode
Device IP Address	0.0.0.0	10.0.0.56	Dynamic IP (DHCP)
Device Subnet Mask	0.0.0.0	255.255.255.0	
Device Gateway	0.0.0.0	10.0.0.1	
DNS Server	0.0.0.0	75.75.75.75	
NTP Server	pool.ntp.org	138.68.46.177	Valid NTP time
System Time:	NTP: JUN 17 2018 day: 167 (SUN) 17:55:07 UTC (When page was loaded)		

At the bottom of the form are two buttons: "Reset To Factory Defaults" and "Submit New Settings".

Figure 2 – NetBurner Configuration Webpage

- Click the Serial link on the navigation bar at the top of the screen.

Note: The automatically assigned network values are shown in the 'DHCP Assigned Values' column. Changes to these values can be made in the 'Static Settings' column. After making any changes, click the 'Submit New Settings' button.

Note: Make note of the Device IP Address that is used as that will be entered in the PLC Designer software to establish the connection to the PLC Multipoint Lighting Control System.

- Make the following selections for the Port 0 configuration (see Figure 3):
 - Data Port Settings: RS-485 Half Duplex
 - Data Baud Rate: 38400



[Network](#) | [UDP](#) | [TCP](#) | [SSH](#) | [Serial](#) | [Password](#) | [HTTPS](#) | [CA Certs](#) | [Advanced](#) | [Help](#)

	Port 0	Port 1
Data Port Settings:	RS-485 Half Duplex ▾	DEBUG ▾
Data Baud Rate:	38400 ▾	115200 ▾
Custom Baud Rate:	0	0
Data Bits:	8 ▾	8 ▾
Data Parity:	None ▾	None ▾
Stop Bits:	1 ▾	1 ▾
Flow Control:	None ▾	None ▾
AT Commands:	<input checked="" type="checkbox"/>	<input checked="" type="checkbox"/>
<input type="button" value="Submit New Settings"/>		

Device Name: SB800ESX-8008 | Version: 02.07.0002

Figure 3 – NetBurner Serial Configuration

- After making any changes, click the 'Submit New Settings' button.
- Click the TCP link on the navigation bar at the top of the screen.

- Update the Listening Network Port configuration (see Figure 4).



TCP		
	Port 0	Port 1
Listen for incoming network connections	<input checked="" type="checkbox"/>	<input checked="" type="checkbox"/>
Listening network port:	<input type="text" value="23"/>	<input type="text" value="24"/>
Timeout and disconnect after this many seconds of inactivity.	<input type="text" value="60"/>	<input type="text" value="60"/>
Allow new connection if the existing connection has been idle for this many seconds.	<input type="text" value="30"/>	<input type="text" value="30"/>
When to begin making outgoing tcp connections:	<input type="text" value="Never"/>	<input type="text" value="Never"/>
Connect on network port:	<input type="text" value="1000"/>	<input type="text" value="1000"/>
Connect to this address:	<input type="text" value="(Enter IP Address)"/>	<input type="text" value="(Enter IP Address)"/>
Alternate address:	<input type="text" value="(Enter IP Address)"/>	<input type="text" value="(Enter IP Address)"/>
Timeout and disconnect after this many seconds of inactivity.	<input type="text" value="60"/>	<input type="text" value="60"/>
Retry failed outgoing connections after this many seconds.	<input type="text" value="360"/>	<input type="text" value="360"/>
Check and maintain valid connection at intervals in seconds.	<input type="text" value="0"/>	<input type="text" value="0"/>
Use custom packetization logic (below)	<input type="checkbox"/>	<input type="checkbox"/>
Number of characters to accumulate before sending TCP packet:	<input type="text" value="32"/>	<input type="text" value="32"/>
Number of msec to wait for accumulated characters: 0 waits forever.	<input type="text" value="100"/>	<input type="text" value="100"/>
Flush TCP frame when this character is received (Enter NA to disable):	<input type="text" value="NA"/>	<input type="text" value="NA"/>
USE SSL rather than TCP for connections:	<input type="checkbox"/>	<input type="checkbox"/>
Always Save Serial Chars regardless of connection status:	<input type="checkbox"/>	<input type="checkbox"/>
<i>Network Settings on Serial Port - Advanced Serial Settings</i>		
<input type="button" value="Submit New Settings"/>		

Device Name: SB800EXSX-8004 | Version: 02.07.0002

Figure 4 – NetBurner TCP Configuration

Note: The Listening Network Port can be updated for either port, however the default setting (23) is typically acceptable. The following link is provided as a resource for typical reserved TCP ports:

https://www.webopedia.com/quick_ref/portnumbers.asp

- After making any changes, click the 'Submit New Settings' button.

Note: Make note of the Listening Network Port that is used as that will be entered in the PLC Designer software to establish the connection to the PLC Multipoint Lighting Control System.

This completes the NetBurner Installation.

3. Open PLC-Designer
 - Navigate to SITE
 - COMMUNICATION SETUP
 - Select Internet
 - Set the static IP Address and Select Port 23