

***BANTAM LIGHTING CONTROLLER
SOFTWARE MANAGEMENT GUIDE***

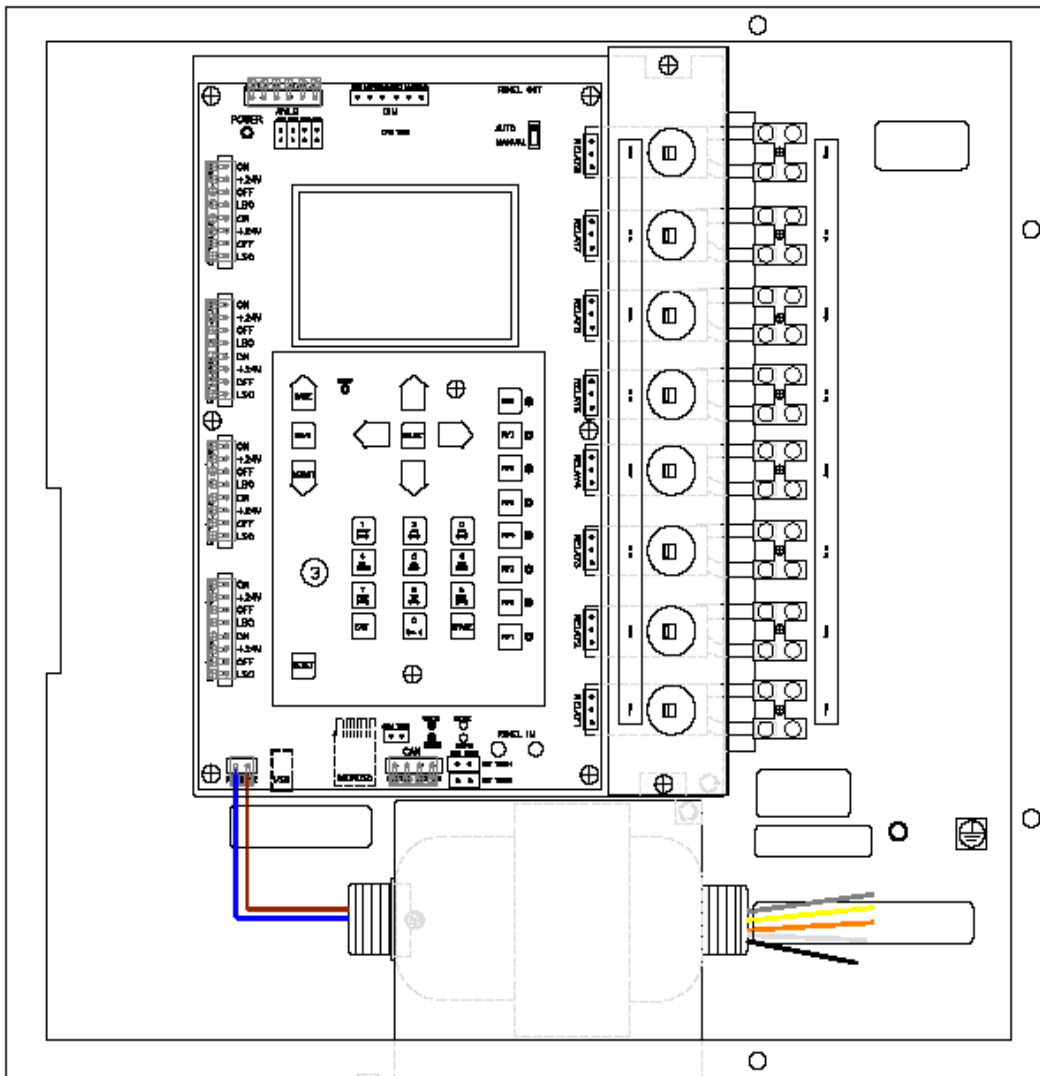



TABLE of CONTENTS

1.0 OVERVIEW	3
1.1.1 SYSTEM OVERVIEW	3
1.1.2 PURPOSE	3
1.1.3 EQUIPMENT AND PARTS	3
2.0 RUN-TIME SOFTWARE UPGRADE PROCEDURE OPTIONS.....	4
3.0 RUN-TIME SOFTWARE UPDATE – WITH A MICROSD.....	5
4.0 BANTAM CONFIGURATION SOFTWARE BACKUP / RESTORE – WITH A MICROSD	5
4.1 BACKUP AND RESTORE TO MICROSD	6
4.2 BACKUP.....	6
4.3 RESTORE	6
5.0 BANTAM CONTROLLER CLEAR CONFIGURATION PROFILE	7
6.0 HYPERTERMINAL INSTALLATION AND CONNECTION TO BANTAM	8
6.1 INSTALL HYPERTERMINAL ON THE SELECTED COMPUTER	8
6.2 ATTACH THE REQUIRED CABLE TO THE BANTAM	8
6.3 DOUBLE CLICK ON THE HYPERTERMINAL.EXE FILE TO START THE APPLICATION	8
6.4 CREATE A NEW HYPERTERMINAL USER NAME	8
6.5 SELECT THE NEW OR UNUSED COM-PORT	9
6.6 SELECT THE FOLLOWING COMMUNICATION PROFILES, AND PRESS OK	9
6.7 PRESS THE ESC KEY ON THE COMPUTER KEYBOARD TO ESTABLISH A CONNECTION TO THE BANTAM.....	10
7.0 RUN-TIME SOFTWARE UPDATE – WITH THE BANTAM USB PORT.....	11
7.1 CONNECT THE BANTAM USB PORT TO A COMPUTER VIA HYPERTERMINAL	11
8.0 BANTAM CONFIGURATION BACKUP / RESTORE – USING THE USB PORT	14
8.1 BACKUP CONFIGURATION TO A COMPUTER VIA THE USB PORT AND HYPERTERMINAL	14
8.2 RESTORE CONFIGURATION TO A BANTAM VIA THE USB PORT AND HYPERTERMINAL.	16
9.0 VERIFY THE CORRECT SOFTWARE BUILD UPDATE	18

 BANTAM LIGHTING CONTROL SYSTEM Software Management Guide	Date: 10/14/2014 Rev: 1
--	----------------------------

1.0 OVERVIEW

1.1.1 System Overview

The Bantam is an easy to use, quick to install, single panel lighting control system which doesn't require any additional relays or contactors to activate the load. The Bantam is designed to be controlled locally via the built in LCD screen and integrated touch pad and also via a USB communication link using HyperTerminal as the serial protocol application. Bantam software updates may be accomplished using either the USB port or a 2GB MicroSD card.


1.1.2 Purpose

This Software Management Guide will provide the necessary instructions needed for software updates, backup, restore and profile clear operations using the Bantam USB port or a 2GB MicroSD Card.

1.1.3 Equipment and Parts

1. 2GB MicroSD Card, **(PN: COMSD2)**
2. 4 pin USB Type A-Male to 4 pin mini-USB Type B-Male, **(PN: COUSB)**.
3. Desktop or Portable Computer (PC) with HyperTerminal installed.

10/14/2014	3101 111 th ST SW #F, Everett WA. 98204 Phone: 425-353-7552 / Fax: 425 353-3353 WEB: www.plcmultipoint.com	Page 3 of 18
------------	--	--------------

 BANTAM LIGHTING CONTROL SYSTEM Software Management Guide	Date: 10/14/2014 Rev: 1
--	----------------------------

2.0 RUN-TIME SOFTWARE UPGRADE PROCEDURE OPTIONS

Using a MicroSD Card perform the following when upgrading Bantam software.

1. Perform a Configuration **Backup**, Section 4.
2. Perform a Software **Update**, Section 3.
3. Perform a **Clear** Configuration profile, Section 5.
4. Perform a Configuration **Restore**, Section 4.
5. Verify the correct software build serial numbers, Section 9.

Using the USB port, perform the following when upgrading Bantam software.

1. Perform a Configuration **Backup**, Section 8.2.
2. Perform a Software **Update**, Section 7.
3. Perform a **Clear** Configuration profile, Section 5.
4. Perform a Configuration **Restore**, Section 8.3.
5. Verify the correct software build serial numbers, Section 9.

10/14/2014	3101 111 th ST SW #F, Everett WA. 98204 Phone: 425-353-7552 / Fax: 425 353-3353 WEB: www.plcmultipoint.com	Page 4 of 18
------------	--	--------------

3.0 RUN-TIME SOFTWARE UPDATE – WITH A MICROSD

Follow this procedure to update the firmware - (BANTAMV1.bin) with a MicroSD card.

- Place the Auto/Manual switch in **Manual** mode.
- Press and hold the EXIT button.
- While holding the EXIT button, press and release the RESET button.

The LOAD PROGRAM MENU is displayed:

- 1 LOAD PROGRAM
FROM USB PORT
- 2 LOAD PROGRAM
FROM MICROSD

The 2GB MicroSD card MUST be in the slot, and the BANTAMV1.bin file MUST be on the MicroSD.

Press 2 on the Bantam keypad.

The following display will appear:

ERASING EXISTING
FIRMWARE.....

When completed, the following display will appear:

TRANSFERRING
FILE.....

Once the file transfer is complete, the LOAD PROGRAM MENU will reappear.

Place the Auto/Manual switch in the **Auto** position.

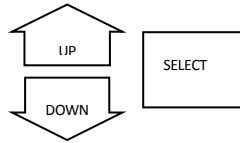
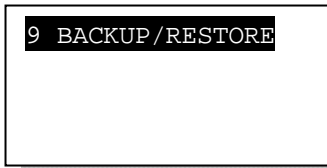
Press the Bantam **RESET** button to resume normal controller operation.

4.0 BANTAM CONFIGURATION SOFTWARE BACKUP / RESTORE – WITH A MICROSD

A 2GB MicroSD card MUST be installed in the Bantam.

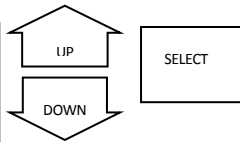
4.1 BACKUP AND RESTORE TO MICROSD

How to get here: PRESS PROGRAM → SYSTEM SETUP → 9

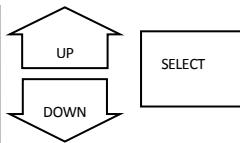
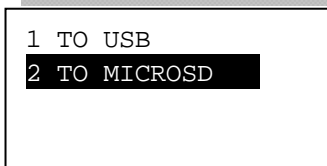


Use UP/DOWN to highlight BACKUP/RESTORE. Push SELECT.
Quick key: Push 9.

4.2 BACKUP

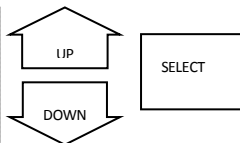
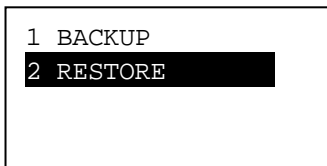


Use UP/DOWN to highlight BACKUP.
Push SELECT
Quick key: Push 1

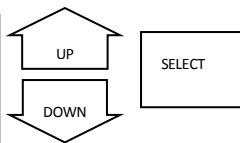
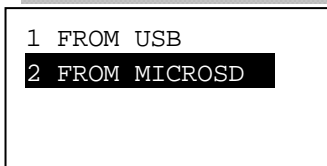


Use UP/DOWN to highlight TO MICROSD.
Push SELECT
Quick key: **Push 2**
This will place the backup file on the MicroSD.

4.3 RESTORE



Use UP/DOWN to highlight RESTORE.
Push SELECT
Quick key: Push 2



Use UP/DOWN to highlight FROM MICROSD. Push SELECT
Quick key: **Push 2**
The backup file will come from the MicroSD.

5.0 BANTAM CONTROLLER CLEAR CONFIGURATION PROFILE

Follow this procedure to clear all configuration profiles in the Bantam.

Press the following buttons:

RESET -> PROGRAM -> (4) OR SYSTEM SETUP -> (7) OR SET DEFAULTS -> PROGRAMS

The following screen will appear:

ARE YOU SURE YOU
WANT ALL USER
PROGRAMS SET TO
DEFAULTS: **YES**

Use the **RAISE** or **LOWER** buttons to select YES, and then press the **SELECT** button.

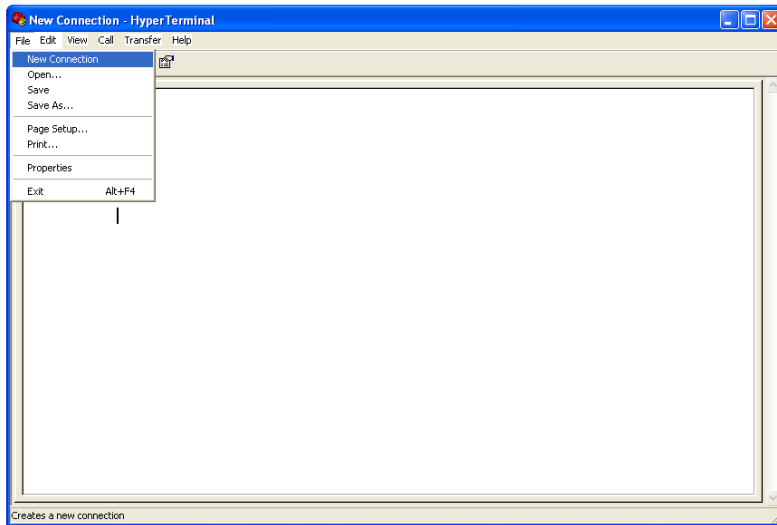
Once the Clear process is complete the following screen will appear:

5 ...NOT USED
6 WARN/SWEEP
7 SET DEFAULTS
8 POWERUP INPUT

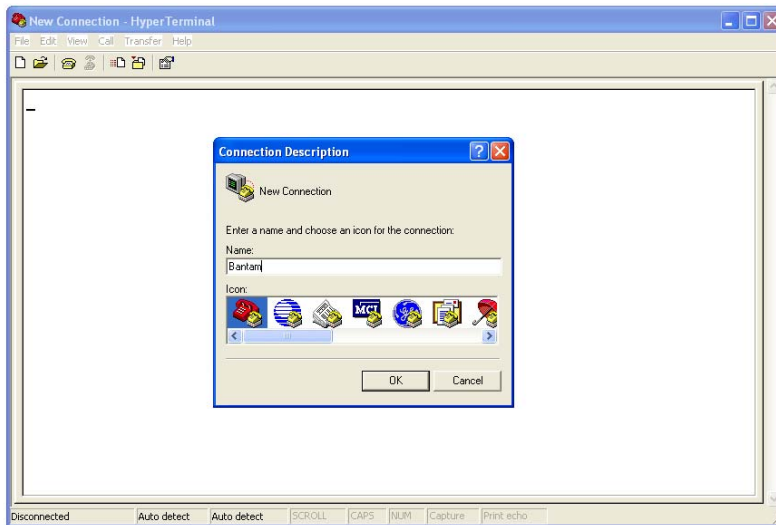
Press the **Exit** button twice or **Reset** button to return to the top Menu screen.

6.0 HYPERTERMINAL INSTALLATION AND CONNECTION TO BANTAM

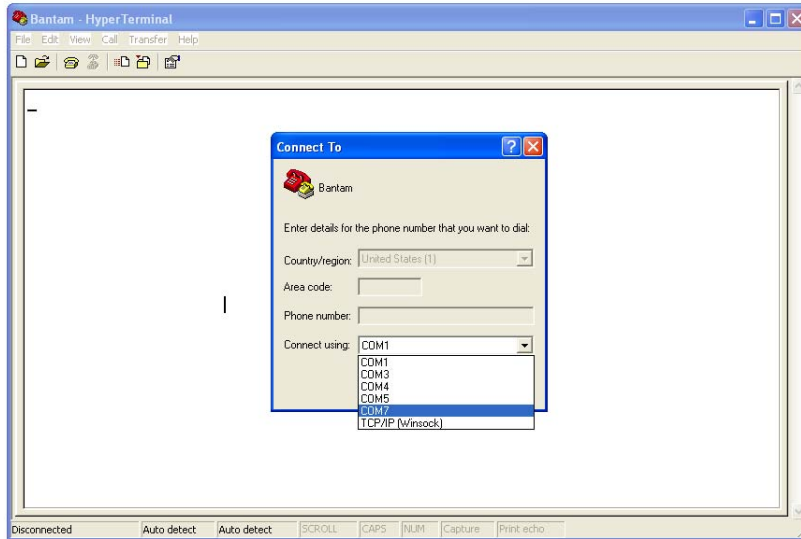
- 6.1 INSTALL HYPERTERMINAL ON THE SELECTED COMPUTER
- 6.2 ATTACH THE REQUIRED CABLE TO THE BANTAM
- 6.3 DOUBLE CLICK ON THE HYPERTERMINAL.EXE FILE TO START THE APPLICATION



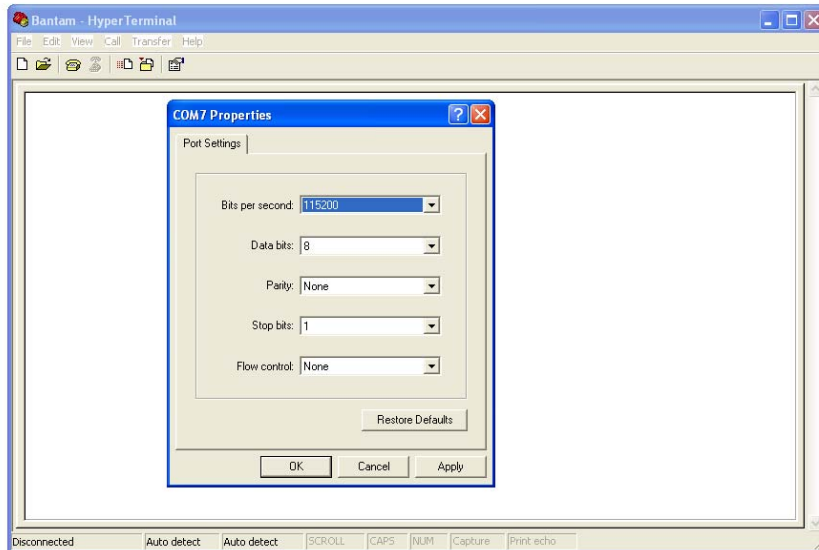
- 6.4 CREATE A NEW HYPERTERMINAL USER NAME



6.5 SELECT THE NEW OR UNUSED COM-PORT



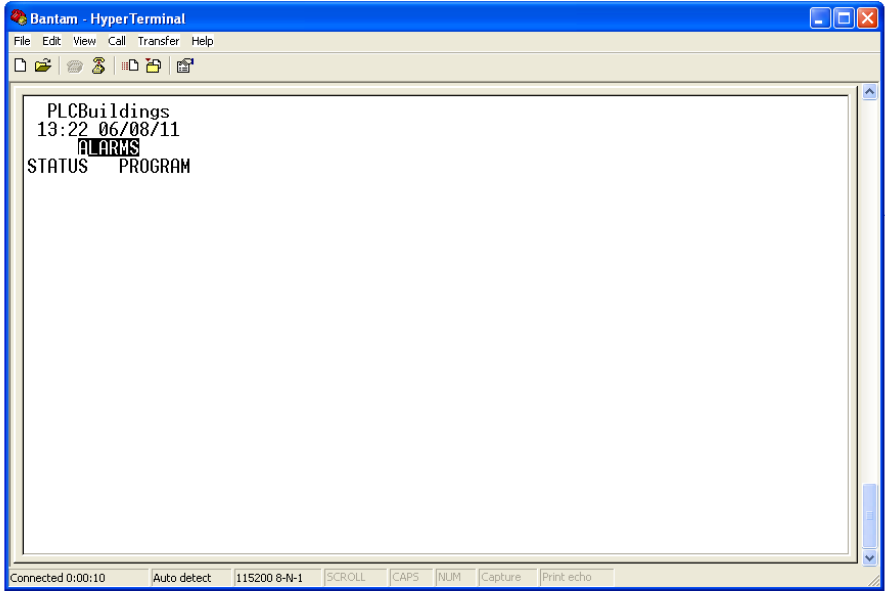
6.6 SELECT THE FOLLOWING COMMUNICATION PROFILES, AND PRESS OK



Baud: 115200
Data Bits: 8
Parity: None
Stop Bits: 1
Flow: None

6.7 PRESS THE ESC KEY ON THE COMPUTER KEYBOARD TO ESTABLISH A CONNECTION TO THE BANTAM

Once the ESC key is pressed, the HyperTerminal application should be established with the Bantam. If properly connected, the following screen should appear.



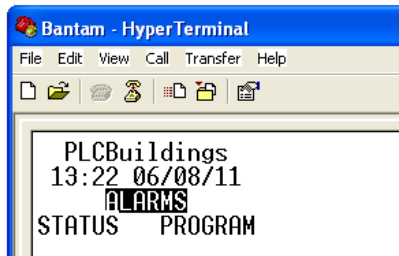
The following computer keys are used to simulate the onboard Bantam keys.

BANTAM KEY	COMPUTER KEY
SELECT	ENTER
UP,DOWN,LEFT,RIGHT	UP,DOWN,LEFT,RIGHT
RAISE	CTRL-R
LOWER	CTRL-L
SAVE	CTRL-S
SPACE	SPACE
EXIT	ESC
0-9 (numeric)	0-9
0-9 (alpha-numeric)	A-Z, a-z, 1-9, 0
RY1-RY8	NO KEYS

7.0 RUN-TIME SOFTWARE UPDATE – WITH THE BANTAM USB PORT

7.1 CONNECT THE BANTAM USB PORT TO A COMPUTER VIA HYPERTERMINAL

Once the computer ESC key is pressed, the HyperTerminal connection should be established with the Bantam. If properly connected, the following computer screen should appear.



Follow this procedure to update the firmware - (BANTAMV1.bin) using the Bantam USB connection.

- Place the Bantam Auto/Manual switch in **Manual** mode.
- Press and hold the Bantam EXIT button.
- While holding the EXIT button, press and release the RESET button.

The LOAD PROGRAM MENU screen should be displayed on the computer screen:

- 1 **LOAD PROGRAM
FROM USB PORT**
- 2 **LOAD PROGRAM
FROM MICROSD**

Press 1 on the computer keyboard. The following computer display will appear. A similar display will also appear on the Bantam LCD screen.

```

WAITING FOR FILE
TO BE SENT...
PRESS ESC/EXIT
TO ABORT

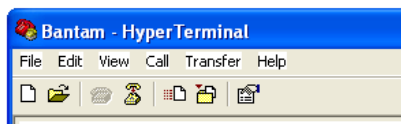
```

The computer will indicate that it's waiting for the proper file to be sent by echoing a stream of C's until the send file process has started.

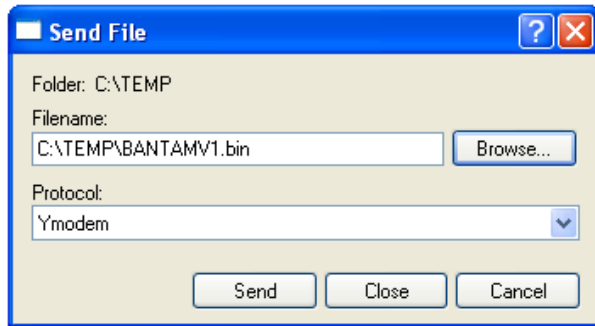
```

WAITING FOR FILE
TO BE SENT...
PRESS ESC/EXIT
TO ABORT
CCCCC...
  
```

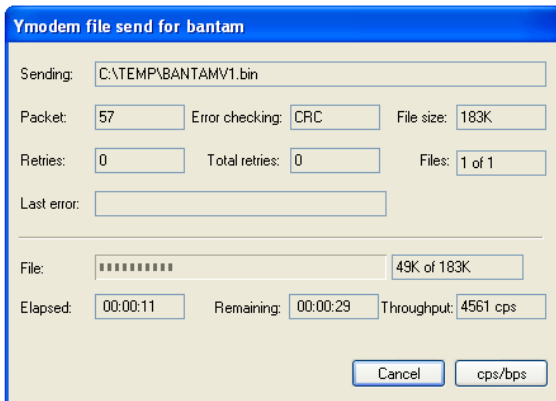
From the computer within the HyperTerminal application select the Transfer tab on the top tool bar. Then select the pull-down **Send File...** tab.




At this time you must navigate or browse to find and select the necessary BANTAMV1.bin file on the computer.



Once the proper BANTAMV1.bin file has been selected, press the Send button using the computer mouse or pointer. A file transfer should resume as indicated by the snap-shot screen below.



 BANTAM LIGHTING CONTROL SYSTEM Software Management Guide	Date: 10/14/2014 Rev: 1
--	----------------------------

Once the entire BANTAMV1.bin file has been sent the following display will appear on the computer screen.

```
PROGRAM COMPLETE
BANTAMV1.bin
  SUCCESSFUL!
PRESS ESC/EXIT
```

Place the Bantam Auto/Manual switch in the **Auto** position.
Press the Bantam **RESET** button to resume normal controller operation.

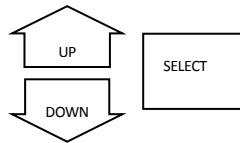
Disconnect the USB cable from the Bantam.

8.0 BANTAM CONFIGURATION BACKUP / RESTORE – USING THE USB PORT

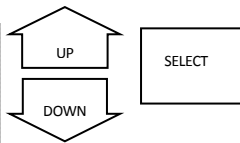
8.1 BACKUP CONFIGURATION TO A COMPUTER VIA THE USB PORT AND HYPERTERMINAL.

Place the Bantam Auto/Manual switch in the **Auto** position.

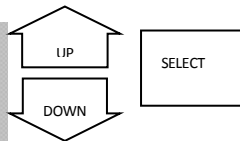
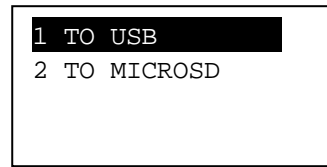
How to get here: PRESS PROGRAM → SYSTEM SETUP → 9



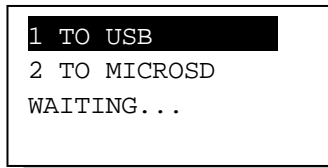
Use UP/DOWN to highlight BACKUP/RESTORE. Push SELECT.
Quick key: Push 9.



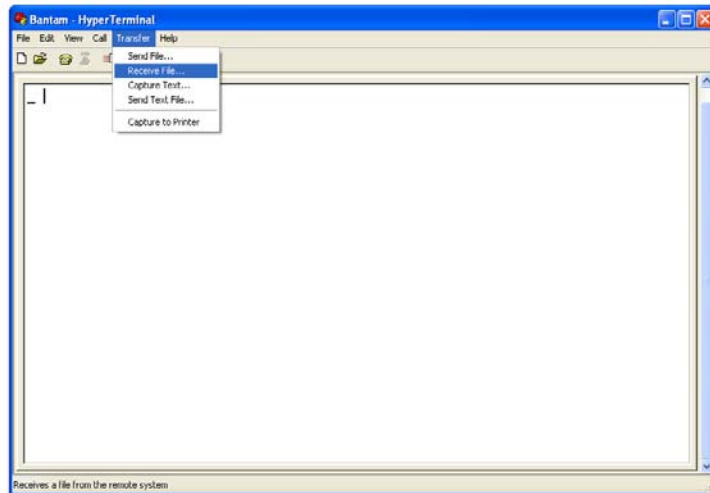
Use UP/DOWN to highlight BACKUP. Push SELECT.
Quick key: Push 1



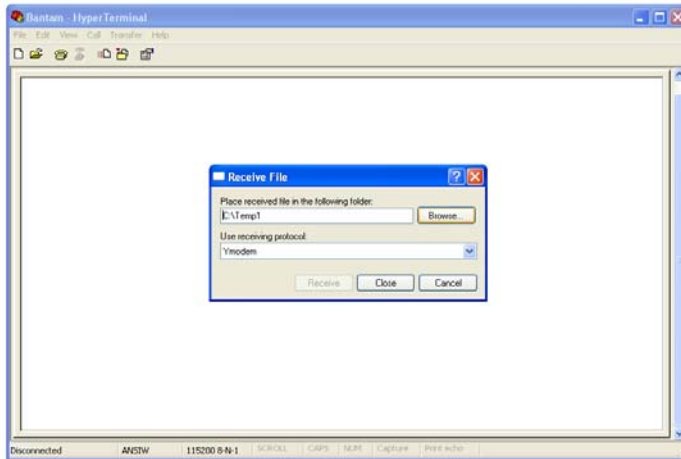
Use UP/DOWN to highlight TO USB. Push SELECT.
Quick key: **Push 1**
This will place the backup file on the computer connected via the USB port.



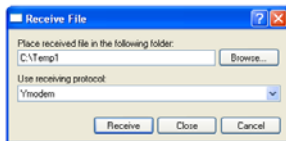
Using HyperTerminal -
Select **Transfer – Receive File...** from the top tool bar.



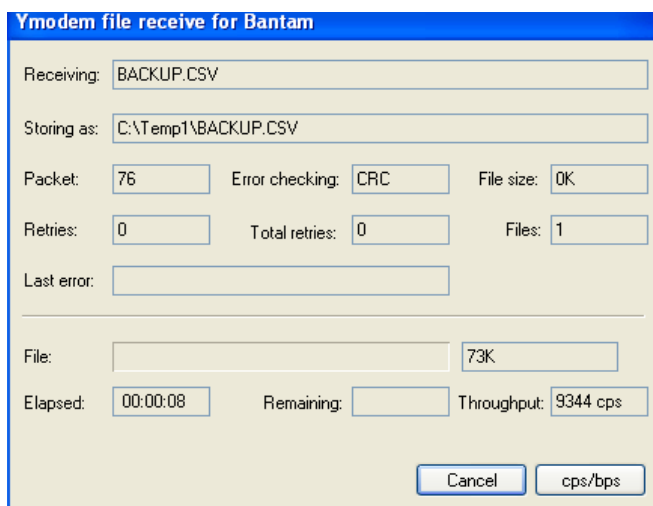
Once the **Receive File...** selection is selected, the following Dialog Box should pop up. Using the Browse... box, select the destination location in the computer where you want the file to be sent.



Once the destination file is complete, the **Receive** button will be highlighted.



Press the **Receive** button to begin the transfer from the Bantam to the computer. After the **Receive** button is pressed the Ymodem Dialog box will appear.

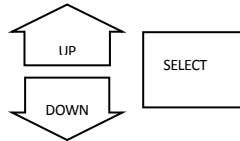


The BACKUP.CSV file is approximately 230K in length. Once the **Backup** is complete the Ymodem file receive Dialog box will exit.

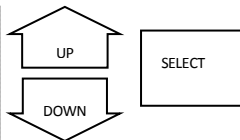
The BACKUP.CSV is now located on the computer.

8.2 RESTORE CONFIGURATION TO A BANTAM VIA THE USB PORT AND HYPERTERMINAL.
Place the Bantam Auto/Manual switch in the **Auto** position.

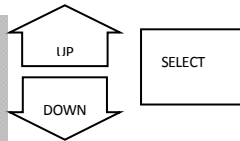
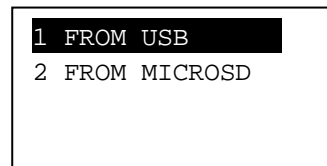
How to get here: PRESS PROGRAM → SYSTEM SETUP → 9



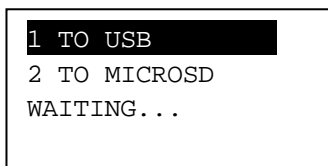
Use UP/DOWN to highlight BACKUP/RESTORE. Push SELECT.
Quick key: Push 9.



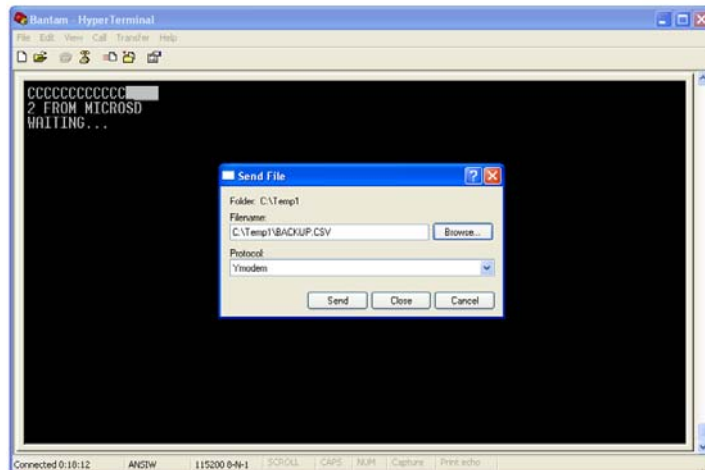
Use UP/DOWN to highlight RESTORE. Push SELECT.
Quick key: Push 2



Use UP/DOWN to highlight FROM USB port. Push SELECT.
Quick key: **Push 1**
The backup file will come from the computer connected via the USB port.

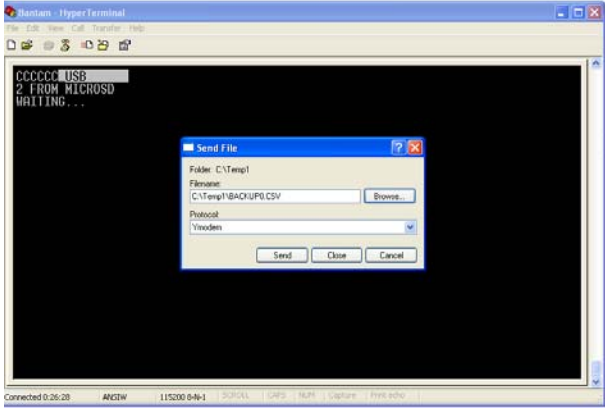


Using HyperTerminal -
Select **Transfer – Send File...** from the top tool bar.

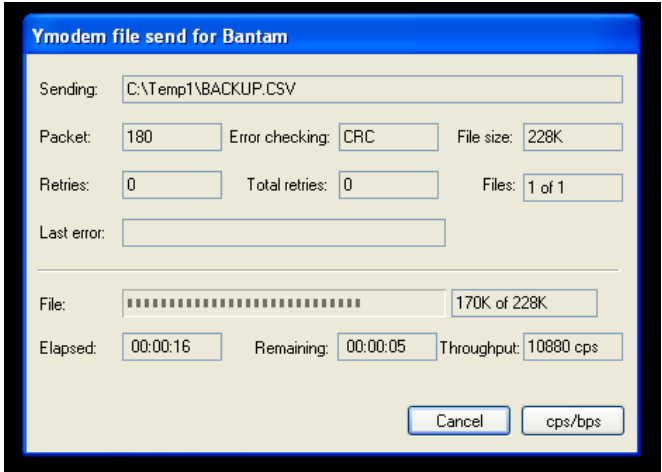


Once the Send file information is complete, the **Send** button will be highlighted.

Press the **Send** button to begin the **Restore** transfer from the computer to the Bantam.



After the **Send** button is pressed the Ymodem Dialog box will appear.



The BACKUP.CSV file is approximately 230K in length. Once the **Restore** is complete, the Ymodem file send Dialog box will exit.

The BACKUP.CSV has now been restored in the Bantam memory.

9.0 VERIFY THE CORRECT SOFTWARE BUILD UPDATE

Perform the following steps from the Bantam.

Press the following buttons: **STATUS** -> **SELECT** -> **Up ARROW**

The following Bantam display will indicate the installed software configuration.

BANTAM LCP8
BOOTLOADER: 1.XX
FIRMWARE: 1.XX
BUILD# XXXXXXXX

Contact PLC-Multipoint to verify the latest Build information for the Bantam.